

FOR LEASE

FLOOR 19 | TOWER A1

VIETTEL COMPLEX BUILDING

*Your workspace,
your way.*

Total leasable area
800 – 1000 m²

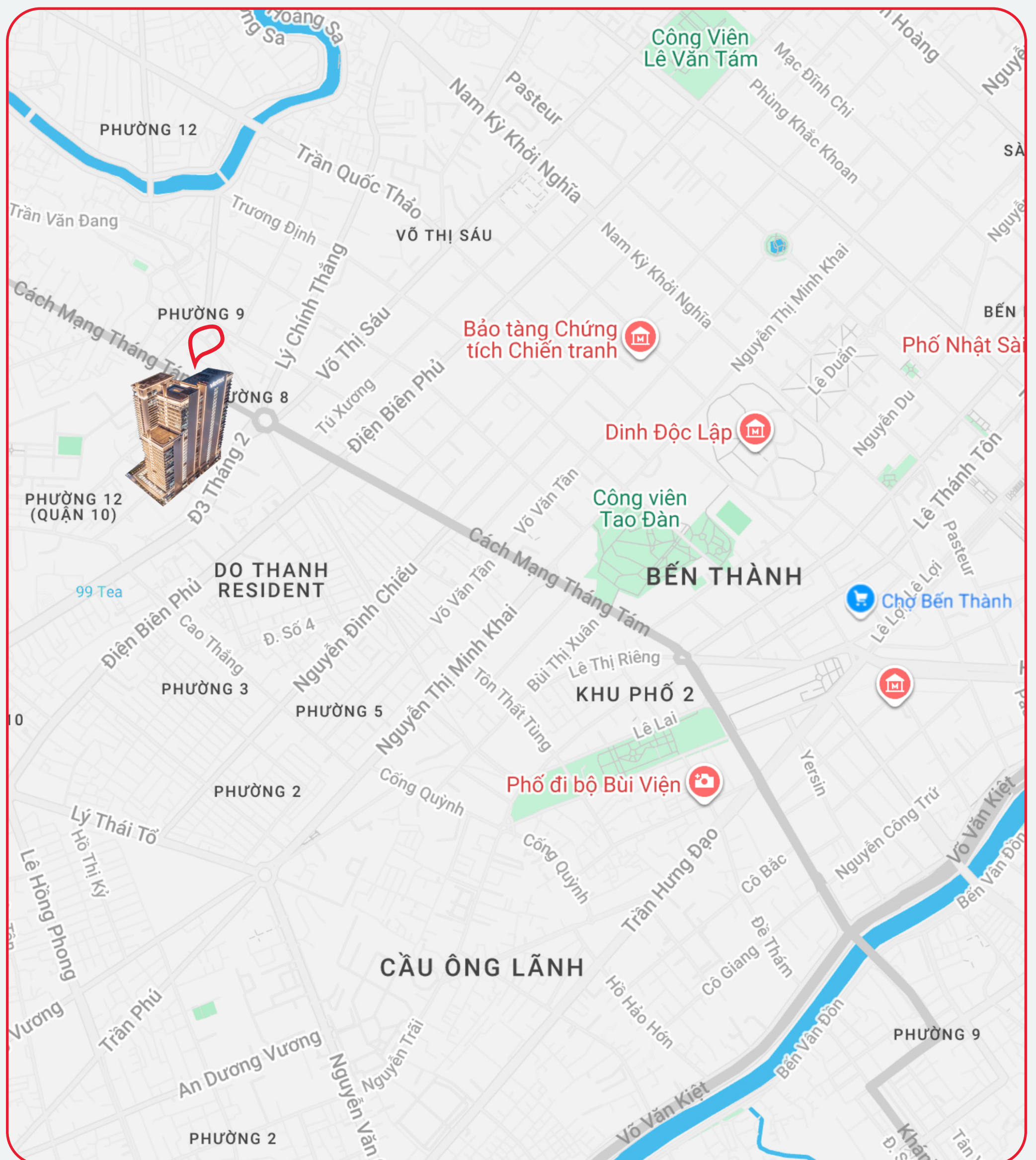
Multiple units from
111 – 380 m²

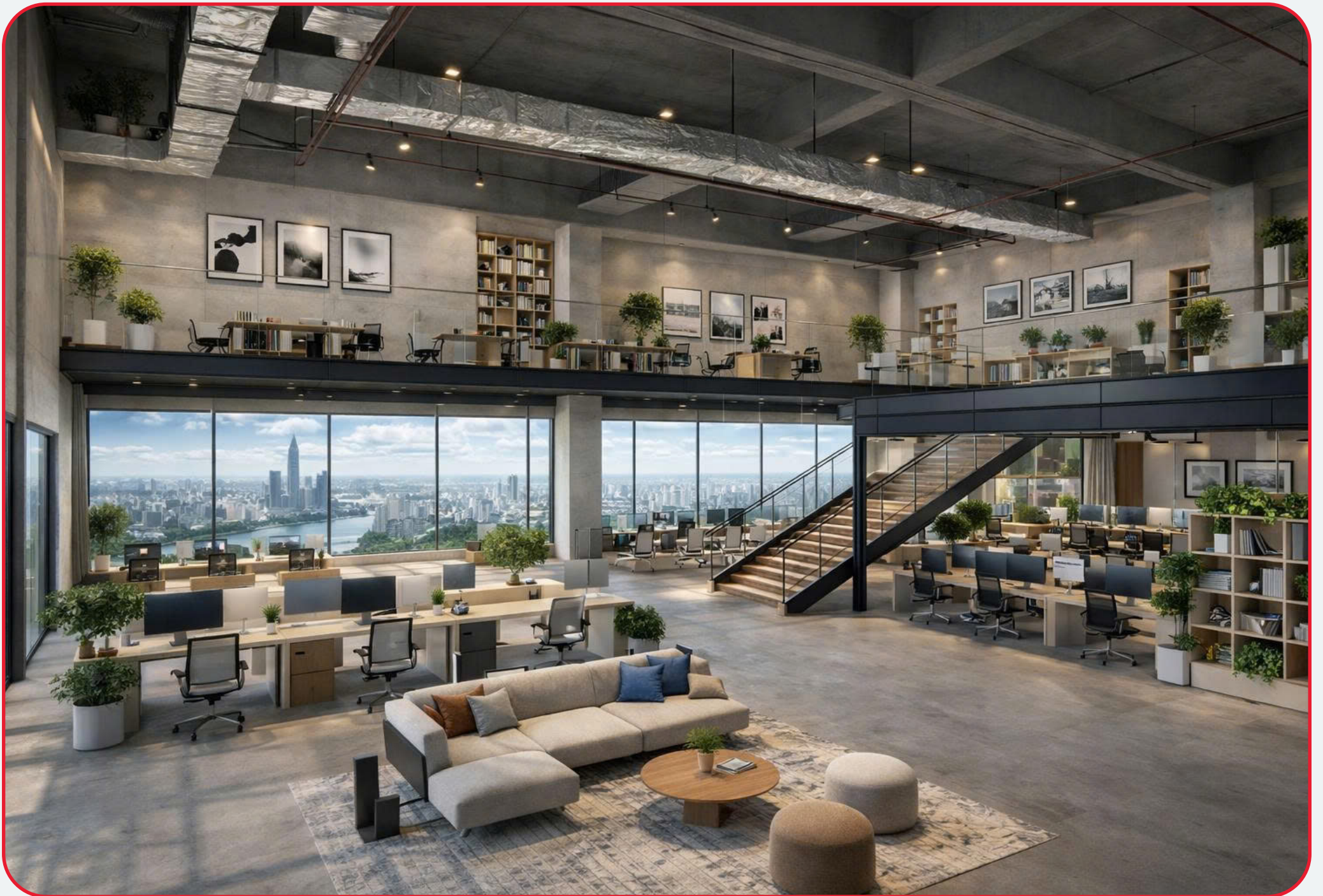
Signature duplex office with
7.14m ceiling height

Designed & delivered
to your requirements

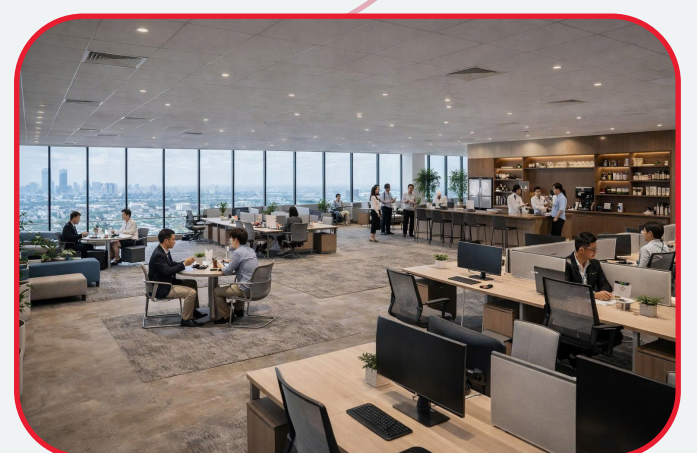
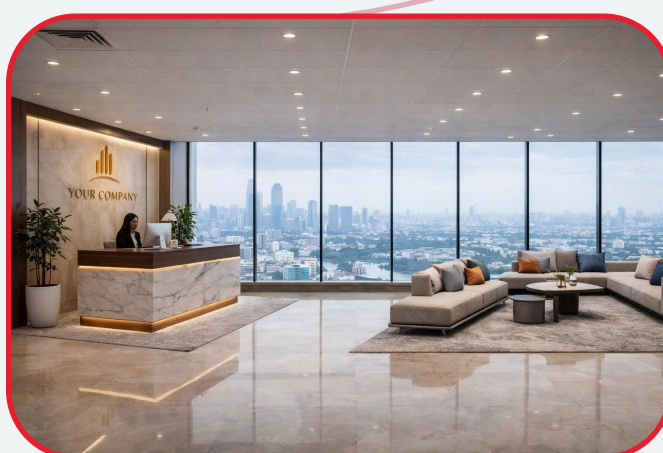
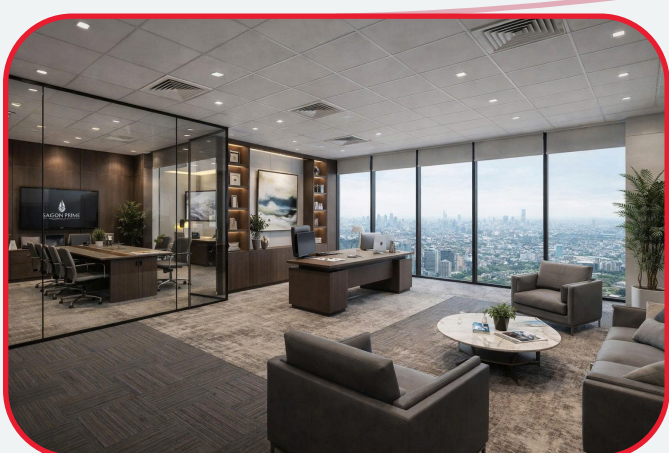
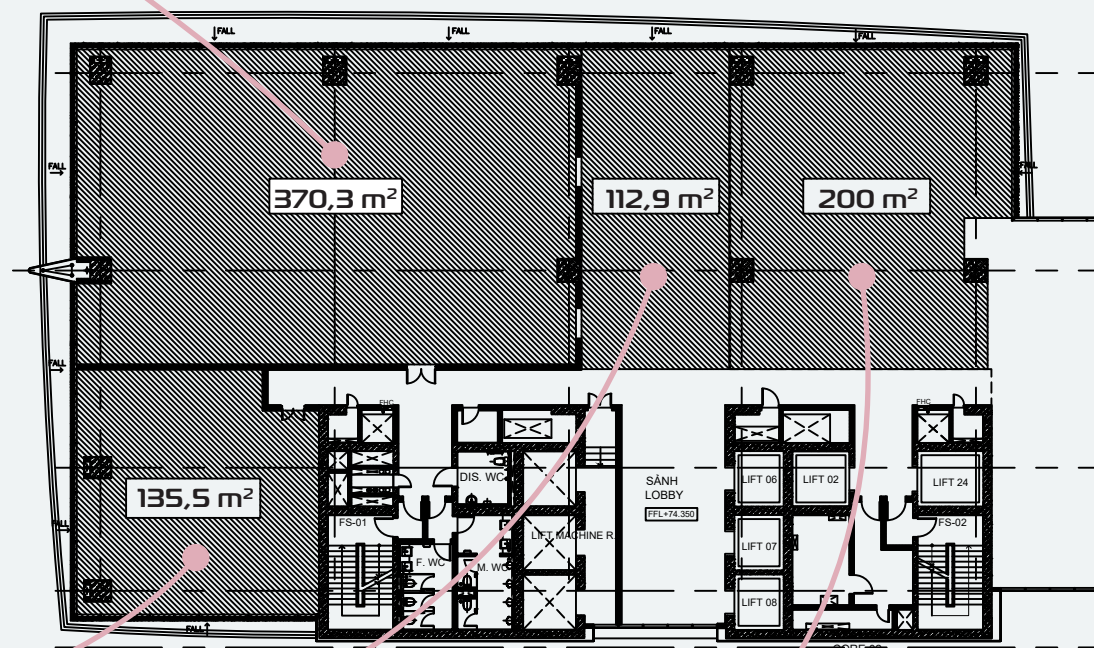
☎ (+84) 366.383.966

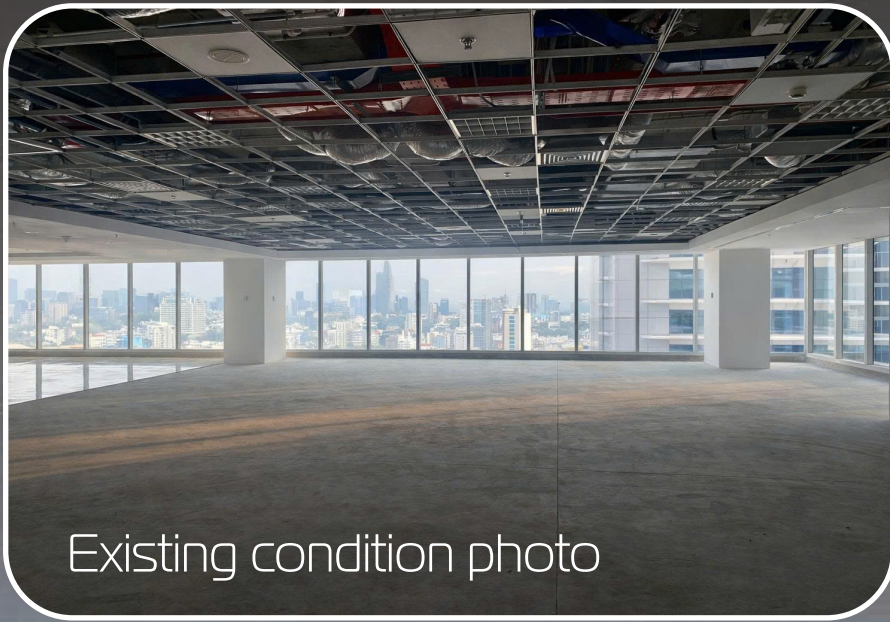
- ▶ Opposite **the Metro station** – a strategic transit hub, capturing vibrant business and lifestyle flows
- ▶ 2.3 km to **the Independence Palace** – a historic city icon
- ▶ 2.5 km to **Tao Dan Park** – a rare green oasis in the urban core
- ▶ 2.3 km to **Ben Thanh Market** – a bustling commercial and tourism hub
- ▶ 2.3 km to **Bui Vien Walking Street** – a vibrant international entertainment destination





- ▶ Signature duplex workspace inspiring openness and enhanced creativity
- ▶ Expansive panoramic city views embracing the full city skyline
- ▶ Flexible work styles optimized for every business model





Existing condition photo

Flexible leasing: Space tailored to your requirements

Tenant benefits: Turnkey fit-out | Strong brand presence

Building amenities:

- ▶ 24/7 security
- ▶ Curated F&B
- ▶ Elegant lobby
- ▶ Modern auditorium
- ▶ High-speed elevators
- ▶ Spacious basement parking



Let's discuss your workspace requirements!
Ms. Dao Thi Hong Hanh – Leasing Executive
Phone: +84 366 383 966 (Zalo/WhatsApp)

Email: hanhdth10@viettel.com.vn | hanhdth510@gmail.com